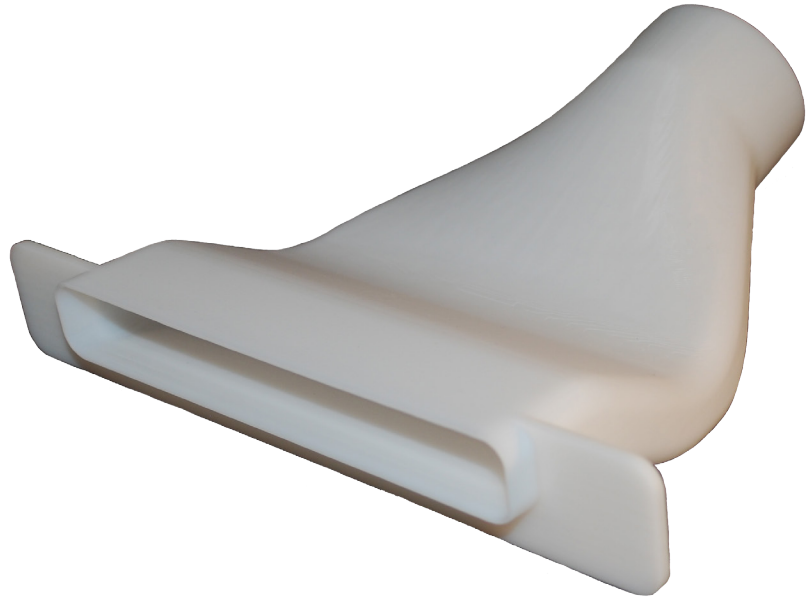


Accura® Xtreme™ White 200

Information provided by 3D Systems

Features

- Exceptionally tough and durable
- Resists breakage and handles challenging functional assemblies
- Great for snap fits, assemblies, and demanding applications
- Ideal for master patterns for vacuum casting



Post-Cured Material

Measurement	Condition	Metric	U.S.
Tensile Strength	ASTM D 638	45 - 50 MPa	6530 - 7250 PSI
Tensile Modulus	ASTM D 638	2300 - 2630 MPa	334 - 381 KSI
Elongation at Break (%)	ASTM D 638	7 - 20 %	7 - 20 %
Flexural Strength	ASTM D 790	75 - 79 MPa	10880 - 11460 PSI
Flexural Modulus	ASTM D 790	2350 - 2550 MPa	341 - 370 KSI
Impact Strength	ASTM D 256	55 - 66 J/m	1.03 - 1.24 ft-lb/in
Heat Deflection Temperature	ASTM D 648		
	@ 66 PSI	47°C	117°F
	@ 264 PSI	42°C	108°F
Hardness, Shore D		78 - 80	78 - 80
Co-Efficient of Thermal Expansion	ASTM E 831-93		
	30 - 50°C	95°C	53°C
	70 - 140°C	180°C	100°C
Glass Transition (Tg)	DMA,E"	52°C	126°F
Water Absorption	ASTM D 570-98	0.38%	0.38%